



**Hydrocar**  
Hydraulic Energy

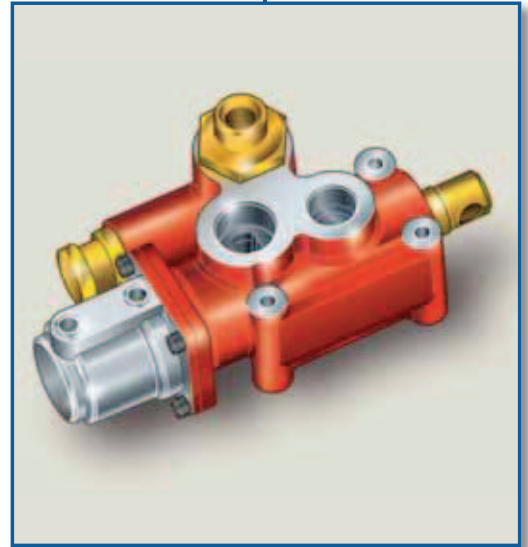
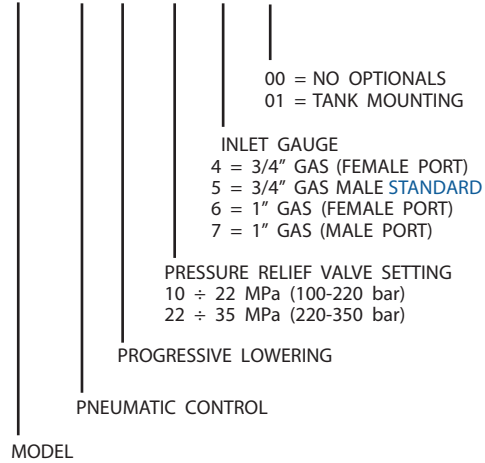
# DM 150

Hydraulic Distributor

ORDERING CODE

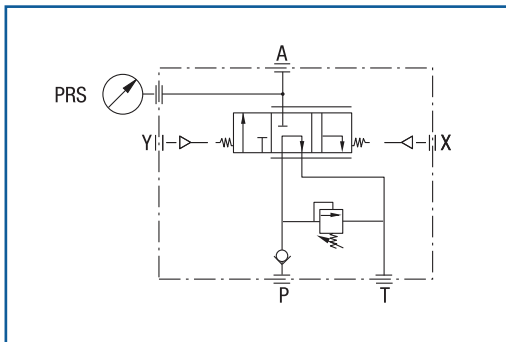
DM 150 P

D150 P P 10 5 00

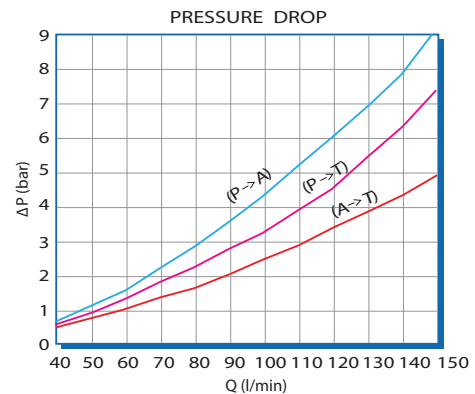


TECHNICAL SPECIFICATIONS			
Flow rate	150 l/min	Fluid temperature °C (t)	-25° + 80°C
Max working pressure	250 bar	Viscosity range	12-100 cSt
Max peak pressure (<0.1 s)	300 bar	Filtering ISO 4406 $\beta_{x=75}$	20/17 25 $\mu$ m
T port max pressure	30 bar	Weight	5.8 kg
Max pneumatic pressure	12 bar	Mineral oil	ISO VG 46

- > Pneumatic operated 150 l/min distributor, for tippers without trailer.
- > It performs tipping, fast lowering or progressive lowering by means of progressive pneumatic control.
- > It includes inlet check valve and adjustable relief valve.  
The relief valve range is from 140 to 250 bar.
- > Flange connection to chassis.
- > Upon manometer or pressure switch gauge.



mod.DM 150P



THE ABOVE SPECIFICATIONS REFER TO OIL TYPE ISO VG 46 AT 50° C ( $\nu$  = 30 cSt)



TRANSPORT  
HYDRAULIC  
SOLUTIONS

TM

INNOVATION IN MOTION

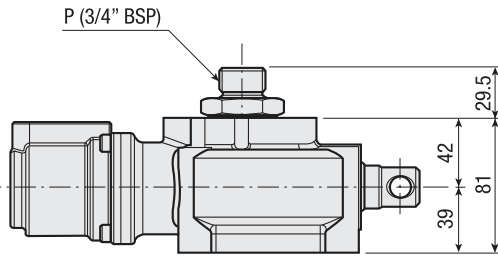


**FREEPHONE**

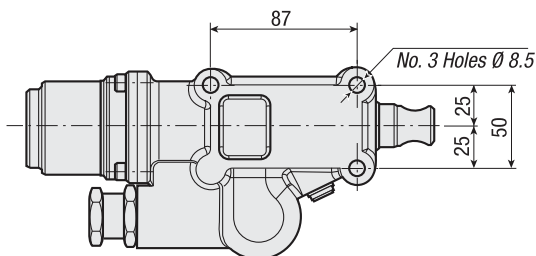
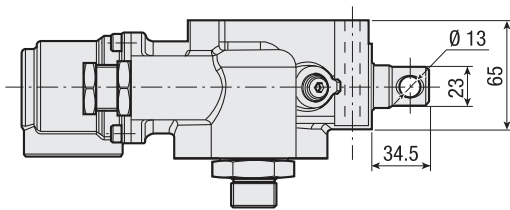
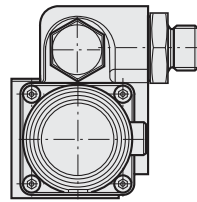
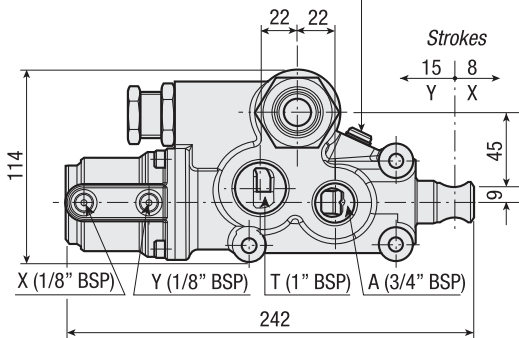
New Zealand **0800 22 55 69**

Australia **1800 22 55 69**

[www.transporthydraulics.com](http://www.transporthydraulics.com)



Holes 1/8" G for press. switch or manometer



Pressure switch with washer  
Tightening torque:  $30 \pm 5$  Nm

UPON REQUEST PRESSURE SWITCH

Pressure switch set at 3 bar advised for working pressure	< 150 bar
Pressure switch set at 7 bar advised for working pressure	> 150 bar

SEALS KIT

CODE

39200028000

CHASSIS MOUNTING KIT

CODE

30KFD004000

Assembly screws using Loctite 243 and tighten with torque  $20 \text{ Nm}^0$



TRANSPORT  
HYDRAULIC  
SOLUTIONS

TM

INNOVATION IN MOTION

FREEPHONE

New Zealand 0800 22 55 69

Australia 1800 22 55 69

www.transporthydraulics.com