

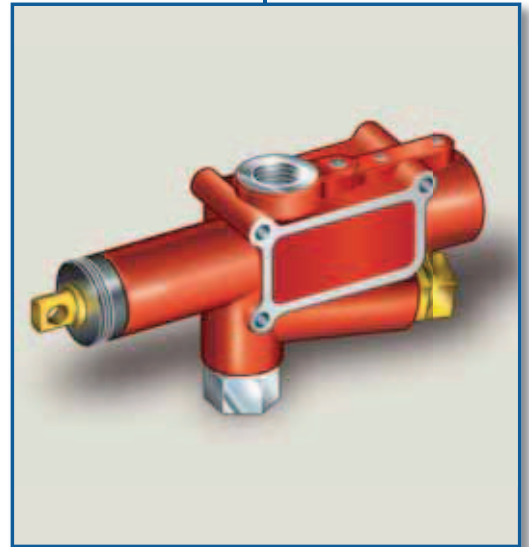


Hydrocar
Hydraulic Energy

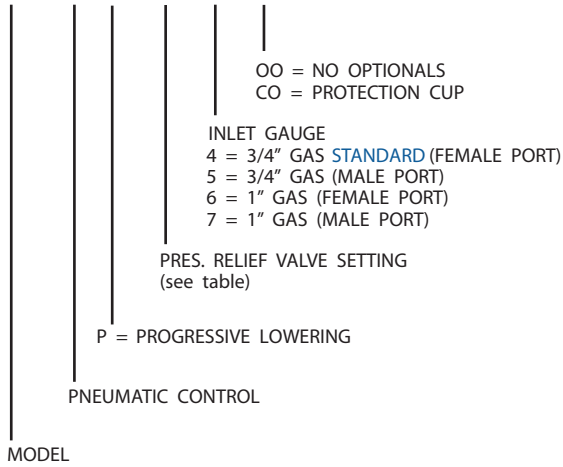
DM180-250

DM 180-250 P

Hydraulic Distributor



ORDERING CODE
D180 P P 08 4 00



TABLE

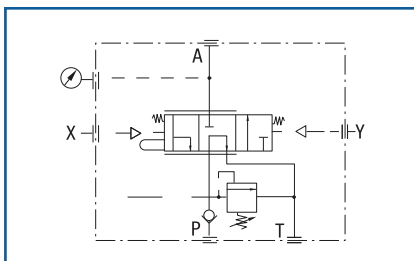
08 ÷ 35 MPa (80-350 bar) with standard relief valve (adjustable)
2B (stand. 140, 220 bar)/piloted relief valve with 2 settings
3B (stand. 130, 220, 350 bar)/piloted relief valve with 3 settings
00 without relief valve (suitable for preset cartridge)

D0 ÷ D9 with adjustable cartridge (from 10 to 19 Mpa)
E0 ÷ E9 with adjustable cartridge (from 20 to 29 Mpa)
F0 ÷ F5 with adjustable cartridge (from 30 to 35 Mpa)
G0 not setting, not plumbed adjustable cartridge

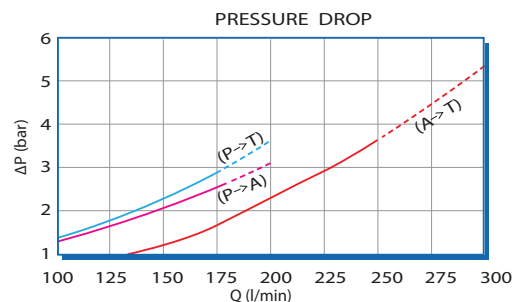
TECHNICAL SPECIFICATIONS

Tipping nom. - Max flow rate	180-200 l/min	Fluid temperature °C (t)	-25° + 80°C
Lowering nom. - Max flow rate	250-300 l/min	Viscosity range	12-100 cSt
Max working pressure	300 bar	Filtering ISO 4406 $\beta_{x=75}$	20/17 25 μ m
Max peak pressure (<0.1 s)	450 bar	Weight	8-9 kg
T port max pressure	30 bar	Max pneumatic pressure	12 bar

- > Pneumatic controlled distributor, oil flow 180 l/min (tipping) and 250 l/min (lowering), for tippers without trailers (single-acting cylinder).
- > It performs tipping, fast and progressive lowering.
- > The inlet check valve and the relief valve are built-in.
- Three models of relief valve are available: adjustable relief valve, interchangeable preset cartridge, piloted relief valve with 2 or 3 possible settings.
- > Standard end-of-stroke rope.
- > Flange connection to tank and chassis.
- > Standard pressure-switch or manometer connection.
- > Protection cup (ordering code)



mod.DM 180-250 P



THE ABOVE SPECIFICATIONS REFER TO OIL TYPE ISO VG 46 AT 50° C ($\eta = 30$ cSt)



TRANSPORT
HYDRAULIC
SOLUTIONS

TM

FREEPHONE

New Zealand **0800 22 55 69**

Australia **1800 22 55 69**

INNOVATION IN MOTION

www.transporthydraulics.com

