

CP2000-2

Pneumatic Control

THREE SECTIONS

ORDERING CODE

400 C2 2 S 00 00

AVAILABLE OPTIONS:
 00 = TRISTABLE LEVER
 0M = MONOSTABLE LEVER
 0N = BISTABLE LEVER
 AO = TRISTABLE LEVER AUTOMATIC PTO DISENGAGEMENT
 AM = MONOSTABLE LEVER AUTOMATIC PTO DISENGAGEMENT
 AN = BISTABLE LEVER AUTOMATIC PTO DISENGAGEMENT

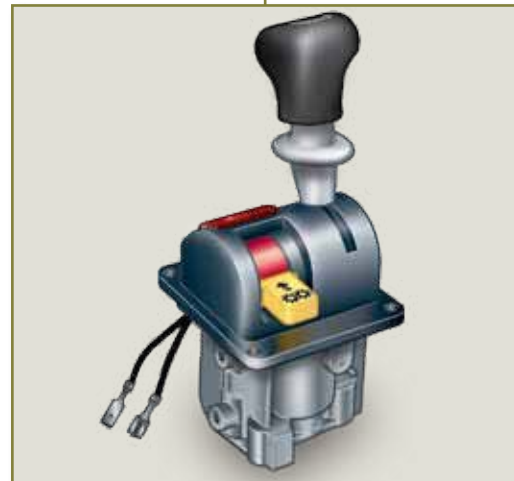
00 = HOLES Ø 1/8" G
 10 = QUICK COUPLING Ø 6x4
 20 = QUICK COUPLING Ø 1/4" G

WITH LIGHT

STAGES

CP2000 SERIES

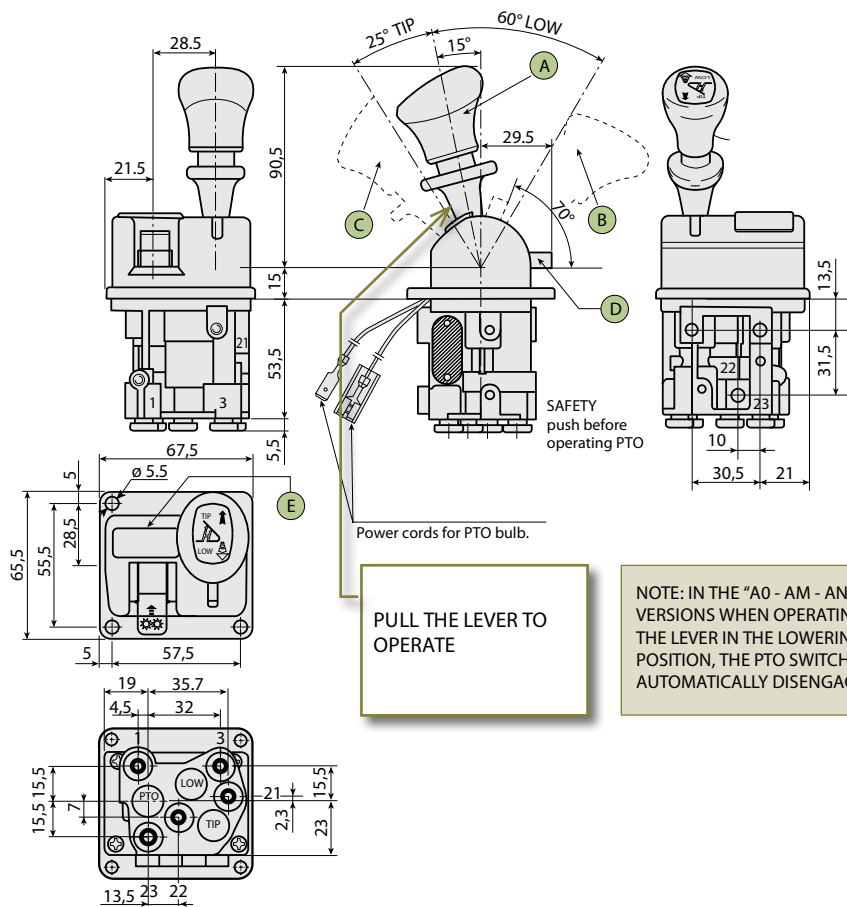
PNEUMATIC CONTROL



TECHNICAL SPECIFICATIONS

Working medium	air	Operative temperature	- 40° + 80°C
Working pressure	max 12 bar	Nominal diameter	Ø 4 mm
Operating voltage	24 V cc (DC)	Contacts	Normally open

> Pneumatic distributor with proportional lowering control.

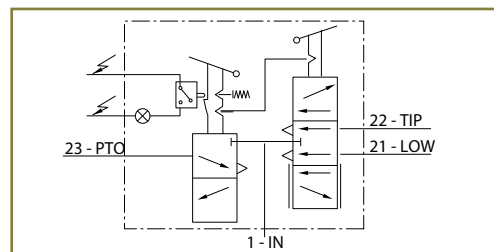


LEVER POSITION

- A Rest position (with lock)
- B Operation PORT 21
- C Operation PORT 22
- D Operation PORT 23 (with stop)

AIR PORTS

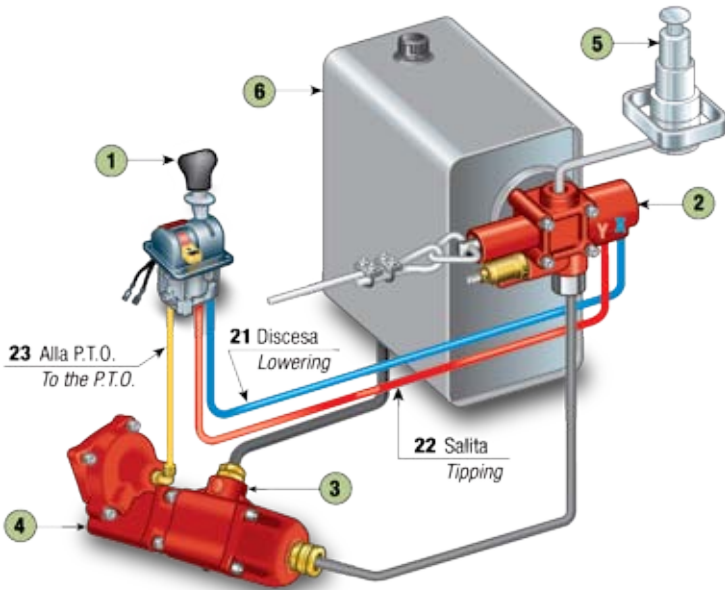
- 1 Compressed air supply (IN) Ø 6x4 e Ø 1/4"-1/8"G
- 21 Control lowering (LOW) Ø 6x4 e Ø 1/4"-1/8"G
- 22 Control tipping (TIP) Ø 6x4 e Ø 1/4"-1/8"G
- 23 Power take off engagement (PTO) Ø 6x4 e Ø 1/4"-1/8"G
- 3 Free exhaust (EX) Ø 6x4 e Ø 1/4"-1/8"G






mod.CP20002

EXAMPLE OF HOOK-UP

- 1 PNEUMATIC CONTROL
- 2 DISTRIBUTOR
- 3 PUMP
- 4 POWER TAKE OFF
- 5 CYLINDER
- 6 OIL TANK



CP2000-2 SPARE PARTS KIT

CODE	DESCRIPTION
4R17M700000	PTO lever kit with disengagement 
4R17M800000	PTO lever kit without disengagement
4R17M300000	Lever kit CP2000 
4R17M600000	Lever with cam 

OPTIONS

DISTRIBUTOR CODE		DESCRIPTION
Aut. PTO disengagement	400C22S10A0 Proportional lowering	A0 Tristable lever (three stable positions: rest, low, tip). With automatic PTO disengagement when body is lowering.
	400C22S10AM Proportional lowering	AM Monostable lever (when not manually operated, the lever returns to neutral position). With automatic PTO disengagement when body is lowering.
	400C22S10AN Proportional lowering	AN Bistable lever (the lever returns to release only from TIP position). With automatic PTO disengagement when body is lowering.
Proportional lowering	400C22S1000	00 Tristable lever (three stable positions: rest, low, tip).
	400C22S100M	0M Monostable lever (when not manually operated the lever returns to neutral position).
	400C22S100N	0N Bistable lever (the lever returns to release only from TIP position).

DIAGRAM

DIAGRAM REFERRED TO SUPPLY PRESSURE = 10 bar

