

MODEL	OP22-2
-------	--------

**140 L/MIN TRUCK & TRAILER PNEUMATICALLY OPERATED TRUCK VALVE**



## OP22 TIPPER VALVE

- 140 l/min nominal twin spool tipper truck valve
- 245bar maximum pressure
- Proportional operation
- Optional HydraForce port relief valves
- 1" BSP ports
- Cast & manufactured in Australia
- Custom designed large internal tank galleries for low pressure drop



INNOVATION IN MOTION



**FREEPHONE**

New Zealand **0800 22 55 69**

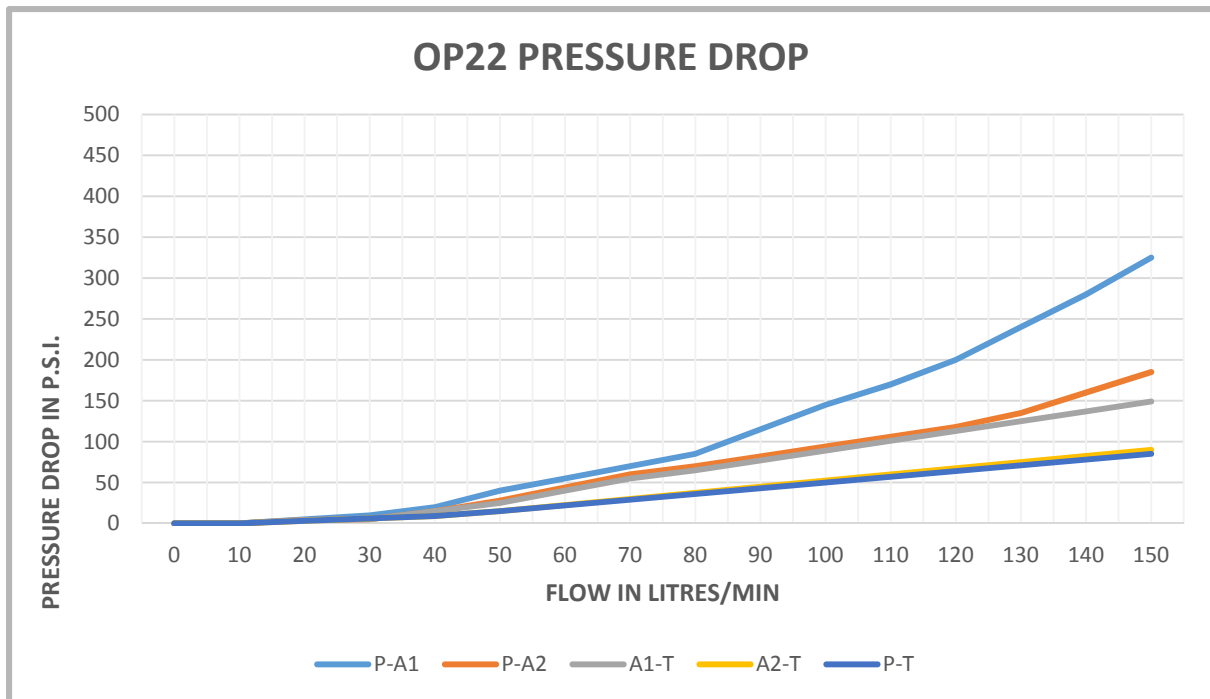
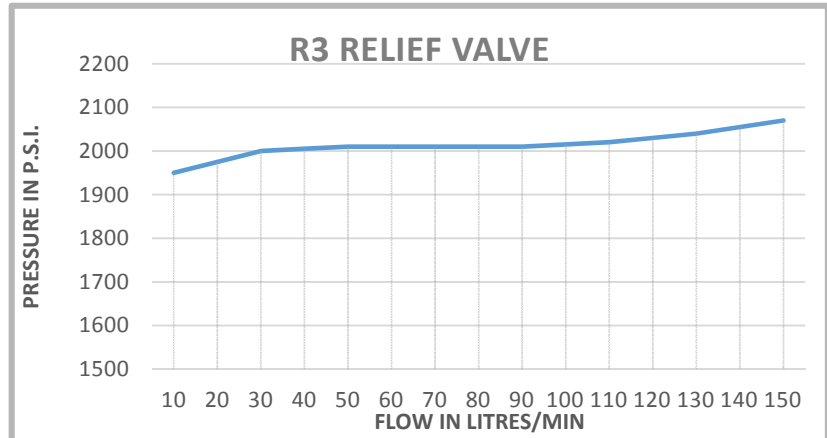
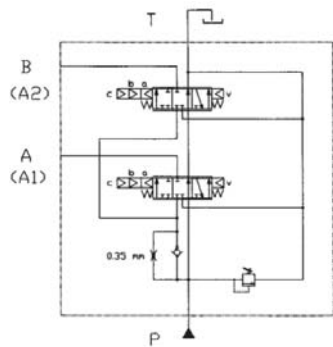
Australia **1800 22 55 69**

[www.transporthydraulics.com](http://www.transporthydraulics.com)

MODEL

OP22-2

### 140 L/MIN TRUCK & TRAILER PNEUMATICALLY OPERATED TRUCK VALVE



TRANSPORT HYDRAULIC SOLUTIONS

INNOVATION IN MOTION



FREEPHONE

New Zealand 0800 22 55 69

Australia 1800 22 55 69

www.transporthydraulics.com